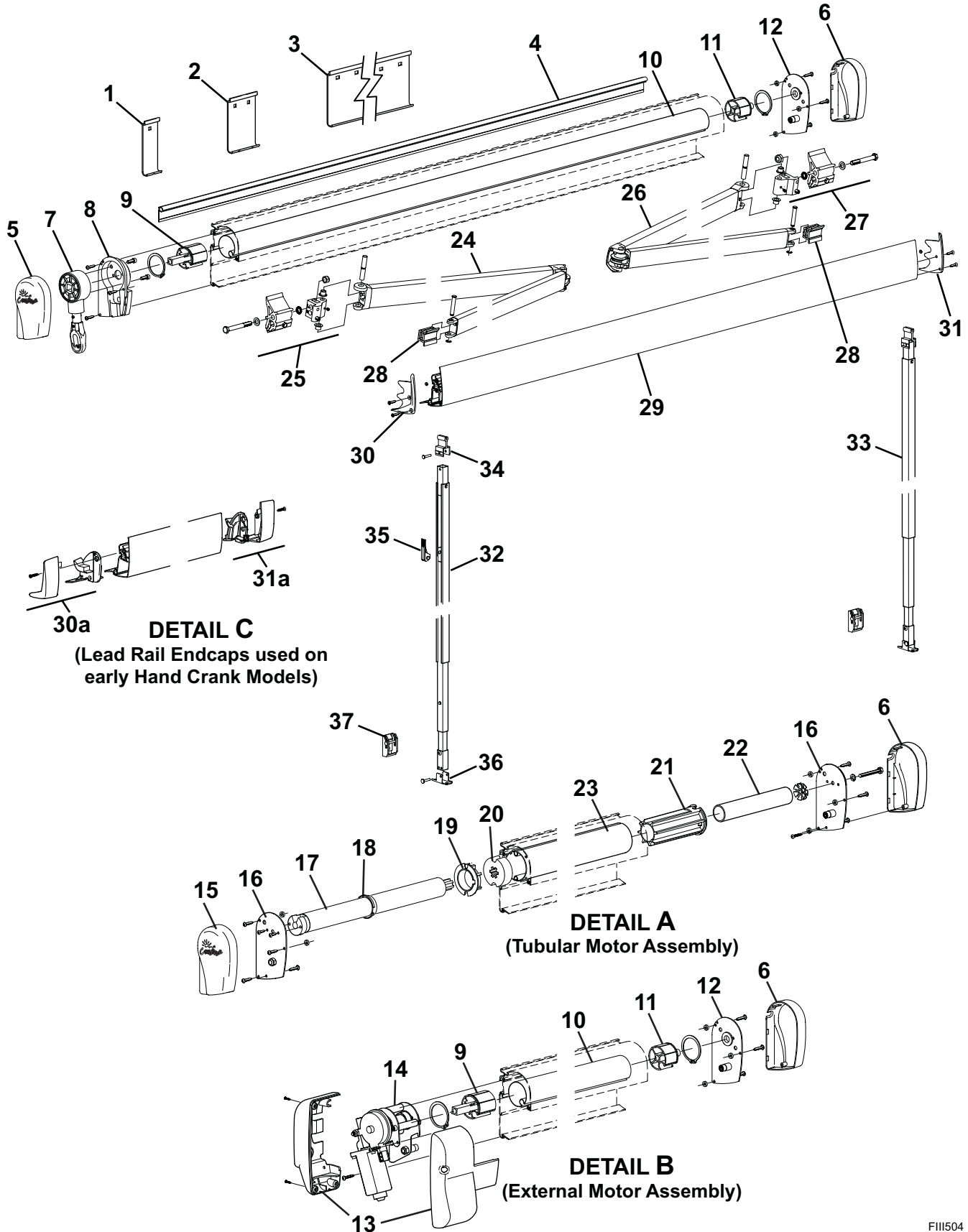




ILLUSTRATED PARTS LIST

FREEDOM SERIES

**FREEDOM SERIES PATIO AWNING ILLUSTRATED PARTS LIST**  
**- MANUFACTURED AFTER 01-09 (SERIES CODE AV)**



Item	Part Number	Description	Notes
	R001543	Bracket Pack	8'-9' 2
	R001544	Bracket Pack	10'-11' 2
	R001545	Bracket Pack	12'-13' 2
1	Available in Bracket Packs only – see note 2	Mounting Plate	1 1/2" 2
2		Mounting Plate	3" 2
3		Mounting Plate	18" 2
4		Awning Rail	See Hardware and Accessories
5		End Cap, LH	Manual Crank
6	R001025XXX	End Cap, RH	
7	R001536-XXX	Manual Crank Assy	
8	R001535-XXX	Manual Crank Housing	
9	R001538	End Plug Assembly, Roller Tube, LH	Manual Crank
10		Roller Tube, 1 7/8, Steel	See Hardware and Accessories
11	R001537	End Plug Assembly, Roller Tube, Idler	
12	R001539	End Plate, Housing, RH	Manual Crank
13	R001503XXX	End Cap Kit, 2-pieces, LH	External Motor
14	R001502	Motor Assy	External Motor
15	R001187XXX	End Cap, LH	Tubular Motor
16	R036425-001	End plate, Housing, Motorized, Tubular Motor	LH, RH
17	R001189	Motor, Tubular	3
18	R060448-001	Crown	
19	R040555-001	Drive Hub	
20	R040723-001	Roller Bearing	
21	R001188	Bushing, Roller Tube	RH
22	R034923-001	Pivot Tube, Roller Tube	RH
23		Roller Tube, 2 1/4	See Hardware and Accessories
24	R012530-TB68L	LH Spring Arm 8'	
	R012530-TB76L	LH Spring Arm 9'	
	R012530-TB94L	LH Spring Arm 10'-13'	
25	R019268-001	Connector Assy, Housing	LH
26	R012530-TB68R	RH Spring Arm 8'	
	R012530-TB76R	RH Spring Arm 9'	
	R012530-TB94R	RH Spring Arm 10'-13'	
27	R019268-101	Connector Assy, Housing	RH
28	R019269-001	Connector Assy, Lead Rail	
29	R001585XXX-xxx	Lead Rail, Outer	1
	R001586XXX-xxx	Lead Rail, Inner	1
30	R001541-XXX	End Plate, Lead Rail	LH
30a	R001027XXX	End Plate, Lead Rail	SEE NOTE 6 LH 4
31	R001542-XXX	End Plate, Lead Rail	RH
31a	R001028XXX	End Plate, Lead Rail	SEE NOTE 6 RH 4
32,33		Ground Support	
		Awning Length	(32) LH (33) RH
		8 foot	R00201 R00205
		9 foot	R00202 R00206
		10-11 feet	R00203 R00207
		12-13 feet	R00204 R00208
34	R00353	Pivot Block	
35	R00144	Flipper Latch Assy	
36	R00394	Carport Foot	
37	R00038	Bottom Bracket	Qty 1
38		Hand Crank Assembly	See Hardware and Accessories

- Notes:
1. XXX = Color; xxx = Length in inches.
  2. Bracket Pack (R001543) for 4'-9' includes 1 ea item 1 2 ea item 2  
 Bracket Pack (R001544) for 10'-11' includes 1 ea item 1 2 ea item 3  
 Bracket Pack (R001545) for 12'-13' includes 2 ea items 1, 3  
 All packs include carriage bolts, washers and nuts.
  3. Motor assembly (item 17) includes items 18, 19 and 20)
  4. Plastic lead rail plates (30a, 31a) used on early hand crank models.